



DESCRIPTION	FIVE COLORS FLEXO FOLDER GLUER, TOP PRINTING, BOTTOM VACUUM TRANSFER, DOCTOR BLADE INKING SYSTEM, CERAMIC ANILOX ROLLER, DOUBLE SLOTTING SHAFTS UNIT/ BOTTOM DIE CUT, DOWN FOLDING/ TOP LOADING COUNTER EJECTOR, OPEN/CLOSE TYPE
MODEL	VENUS-822 FFG
SIZE	800x2200 MM





MAIN TECHNICAL SPECIFICATIONS: (MODEL: VENUS-822 FFG):

ITEM	DESCRIPTION	QTY
1	<p>LEAD EDGE FEEDER:</p> <ul style="list-style-type: none"> ✚ THREE WHEELS SHAFT DESIGN. ✚ INTERNET ONLINE SERVICE SUPPORT. ✚ VACUUM DUSTPROOF SYSTEM. ✚ SKIP FEEDING. 	1
2	<p>PRINTING UNIT:</p> <ul style="list-style-type: none"> ✚ OPEN/CLOSE TYPE. ✚ TOP PRINTING. ✚ CERAMIC ANILOX ROLLER. ✚ BOTTOM VACUUM TRANSFER. ✚ DOCTOR BLADE INKING SYSTEM. <p>✚ OPTION:</p> <ul style="list-style-type: none"> ✓ VACUUM SHEET TRANSFER UNIT WITH IR OR HOT AIR DRYERS. 	5
3	<p>SLOTING UNIT:</p> <ul style="list-style-type: none"> ✚ PRECREASING SHAFT. ✚ DOUBLE SLOTTING SHAFTS. ✚ CREASERS/ SCORING SHAFTS. ✚ CENTRAL KNIFE IS FIXED TYPE. ✚ PRECREASING, CREASINF AND SLOTTING POSITIONS ARE ALL IN UNITED MOVEMENTS. <p>✚ OPTION:</p> <ul style="list-style-type: none"> ✓ INDEPENDENT CREASING UNIT. 	1
4	<p>ROTARY DIE CUTTING UNIT:</p> <ul style="list-style-type: none"> ✚ BOTTOM DIE CUTIING MODE. ✚ WITH SYNC. DRIVE: <ul style="list-style-type: none"> ✓ ANVIL ROLLER IS SERVO DRIVEN. ✓ DIE ROLLER IS GEAR DRIVEN. ✚ DIE FIXATION IS WITH SCREW FIXED, PULL RING IS WITH MOTORIZED ADJUSTMENT. ✚ ANVIL TRIMMING DEVICE. <p>✚ OPTION:</p> <ul style="list-style-type: none"> ✓ WASTE REMOVAL SECTION. ✓ SERVO DIRECT DRIVE. 	1



<p>5</p>	<p><u>INLINE FOLDER GLUER:</u></p> <ul style="list-style-type: none"> + DOWN FOLDING. + T-BELT DESIGN. + FULLY AUTOMATIC CONTROL. + SERVO DRIVE CONTROL. + INCLUDING CENTRAL COMPUTER MANAGEMENT SYSTEM TO SCHEDULE ALL ORDERS EXTERNALLY, CAN BE CONNECTED WITH ERP SYSTEM. + INCLUDING THE FUNCTION OF ONE SHEET IN - TWO OR THREE SHEETS OUT (DUEL OR TRIPLE FOLDING). + ERO TOP GAMMA GLUING SYSTEM WITH CAMERA INSPECTION, TRIM REMOVAL, FAULT BOX MARKER, UV KIT, HORN AND REMOTE ALARM, REMOTE CONTROL. + PRE-SET CPNTROL. + SQUARING SECTION. + TOP LAODING COUNTER EJECTOR. <p>+ OPTION:</p> <ul style="list-style-type: none"> ✓ IN CASE OF BOTTOM PRINTING/UP FOLDING, STITCHING UNIT IS AVAILABLE. 	<p>1</p>
<p>6</p>	<p><u>COMPUTER CONTROL SYSTEM:</u></p> <ul style="list-style-type: none"> + TOUCH SCREENS DISPLAY AND CONTROL FOR EACH UNIT. 	

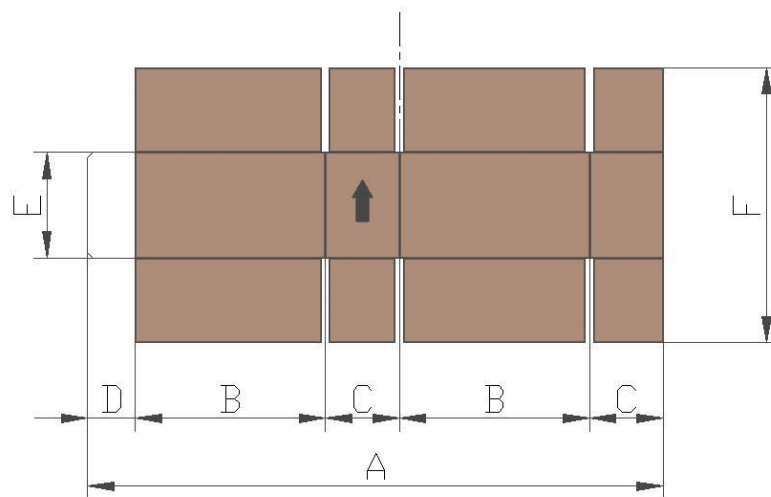


地址 江蘇省儀徵市馬集鎮八里工業集中區
電話 0514-8366 5988 郵編 211414
傳真 0514-8366 6448 郵箱 sales@weipong.com

Add Bali Industry Area, Maji Town, Yizheng City, Jiangsu province, China (211414)
Tel 86 514 83665988 E-mail sales@weipong.com
Fax 86 514 83666448
www.weipong.com

MACHINE SPECIFICATIONS:

Technical Data (MM)		Model	VENUS-822 FFG
Max. Sheet Length(A)	MAX		2200
	MIN		500
Max. Sheet Width(F)	Continuous Feed		800
	Skip Feed		1100
Min. Sheet Width(F)			250
Max. Print Area (Mathew system)			800x2050
Max. Print Area (mounting plate)			770x2050
Min. Slotter gap	Reverse direction-mm	MIN(B)	190
		MIN(C)	60
	Normal direction-mm	MIN	125
Box Height	MIN(E)		90
Glue Lap Width(D)			50
Max. Machine Speed	(BOX/H)		18,000
Board Thickness			1.5-9
Color process precision			±0.5



**** All data is for reference only, not a contract value.**

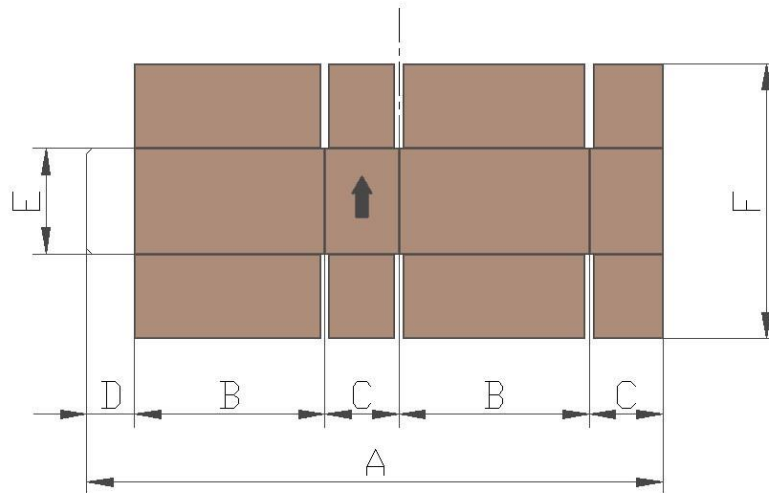
****Speed varies according to the sheet quality, sheets sizes, running conditions,...etc.**

**** We have the right to change the specification for improvement use or the brand with the same level. without further notice.**



地址 江蘇省儀徵市馬集鎮八里工業集中區
電話 0514-8366 5988 郵編 211414
傳真 0514-8366 6448 郵箱 sales@weipong.com

Add Bali Industry Area, Maji Town, Yizheng City, Jiangsu province, China (211414)
Tel 86 514 83665988 E-mail sales@weipong.com
Fax 86 514 83666448
www.weipong.com



SPECIFICATIONS

MODEL	VENUS-822 FFG
B+C max.	1025
B+C min.	340
F max.	800
F min.	250
A max.	2200
A min.	720
Max. Machine Speed (BOX/HR)	18,000
Board Thickness	A-B-CE-BC-BE

**** All data is for reference only, not a contract value.**

****Speed varies according to the sheet quality, sheets sizes, running conditions,...etc.**

**** We have the right to change the specification for improvement use or the brand with the same level. without further notice.**